



Domaine de Recherche et d'Innovation Majeur



Welcoming guide for DIM C-BRAINS PhD students



Summary

Introduction	3
What you need to know	4
Links for Visa procedures	5
Findind student accomodation	6
Bank account	6
Academic registration	7
Taxes	8
Health insurance	8
Transport	9
French classes	9
Publications and acknowledgment	9

Introduction

About DIM : Domaine d'Intérêt Majeur

A network of universities, higher education establishments, research laboratories and companies in the Ile-de-France region supported by the Ile-de-France Region for 5 years (2022-2026).

About DIM C-BRAINS: Cognition & Brain Revolution Artificial Intelligence, Neurogenomics & Society.

The aim of the C-BRAINS project is to overcome the technological, conceptual and organizational obstacles to understanding the complexities of the brain. The DIM C-BRAINS DIM also aims to promote the training of a new generation of researchers, by setting up an international doctoral program.

Three main axes guide the actions of the DIM C-BRAINS in favor of neuroscience and cognitive science (see more <https://dim-cbrains.fr/en/axes-projects/list>).

- Genomics, human cells, reprogramming and neuro-organoids
- Quantitative approaches to the exploration of behaviour and cognition
- Neural networks, modelling and artificial intelligence

PhD Program International DIM C-BRAINS

One of the major objectives of the DIM C-BRAINS is to contribute to the training of a new generation of researchers in neuroscience and cognition, by reinforcing the attractiveness and visibility of research in the Paris region at the highest international level.

- This international doctoral program is specifically dedicated to students currently enrolled in a master's program and internship outside France, who would like to pursue a thesis in one of the DIM C-BRAINS priority areas.
- This programme is in partnership with the **Fondation des Neurosciences de Paris (FNP)**, the **Brain Institute (Institut du Cerveau)** and the **CEA**.

C-BRAINS project leaders

M. Serge Picaud (Director, Vision Institut)

Ms. Virginie van Wassenhove (Team leader at the NeuroSpin Institute)

M. Jean Christophe Poncer (Deputy-director of the Institut du Fer à Moulin)

Contacts

Scientific coordination: Marine Belin-Siwiaszczyk
contact@dim-cbrains.fr

Administrative and financial management: Raïssa Tall
raissa.tall@inserm.fr

What you need to know

All administrative requirements from doctoral registration at the university, to visa and contract formalities, are the responsibility of the PhD supervisor and the host team manager.

Regarding financial support:

- The PhD's three years are sponsored by the DIM C-BRAINS via INSERM Paris Centre Est, after signing a work contract, or doctoral contract, with the host team's human resources service.
- A €5,000 grant is awarded by the DIM C-BRAINS to your host laboratory to cover scientific expenses such as scientific training, international and national events, purchasing scientific books,
- The FNP offers you an installation bonus of €7,000 to help you pay visa costs, as well as university and doctoral school fees, accommodation and home insurance accommodation.

Before coming,

- You should start some administrative procedures in collaboration with your future PhD supervisor and the host team manager: visa, housing, social security, medical and housing insurances (mandatory in France), opening a bank account in France (condition for payment of the FNP bonus and wages), university registration and working contract.
- Thought to get your plurilingual birth certificate for EU and non-EU document established by a foreign authority to be legalized and /or apostilled and sworn translation in French.

What you need to do in France

- ▶ <https://france-visas.gouv.fr/en/web/france-visas/your-arrival-in-france>

Whether or not you need a visa*, entry into the Schengen area of third-country nationals must comply with a certain number of conditions, as provided for by the European and national regulations in force.

Upon your arrival in France

You will be subject to administrative obligations to transform your visa into a regular residence permit. These formalities will also allow you to access the services and benefits provided by the French administration. They differ depending on the visa issued to you.

**Visa requirements for longer than 90 days excluded for citizen of the European Union, European Economic Area, Switzerland, Andorra, Monaco, San Marino, and the Vatican may stay in the European territory of France.*

Links for visa procedures

<https://france-visas.gouv.fr/en/web/france-visas/studies-training>

For any stay in France exceeding 90 days

- **You are required to apply in advance for a long-stay visa.** In this instance your nationality does not exempt you from requirements.
- Whatever the duration of your planned stay, **the duration of your long-stay visa must be between three months and one year.**
- In order to extend your stay beyond the period of validity of your visa, **you must apply for a residence permit at a prefecture.**
- **During its period of validity, the long-stay visa is equivalent to a Schengen visa,** enabling you to move around and stay in the Schengen Area outside France for periods not exceeding 90 days over any period of 180 consecutive days, under the same conditions as if you held a Schengen visa.

ATTENTION: since January 2021, Students from the UK require a visa

▶ <https://france-visas.gouv.fr/en/brexit>

Long-stay visa equivalent to a residence permit (VLS-TS)

You **MUST** validate your VLS-TS within three months of arriving in France.

▶ <https://administration-etrangers-en-france.interieur.gouv.fr/particuliers/#/>

If you fail to do so, you will no longer be legally present in France and will be unable to re-enter the Schengen Area.

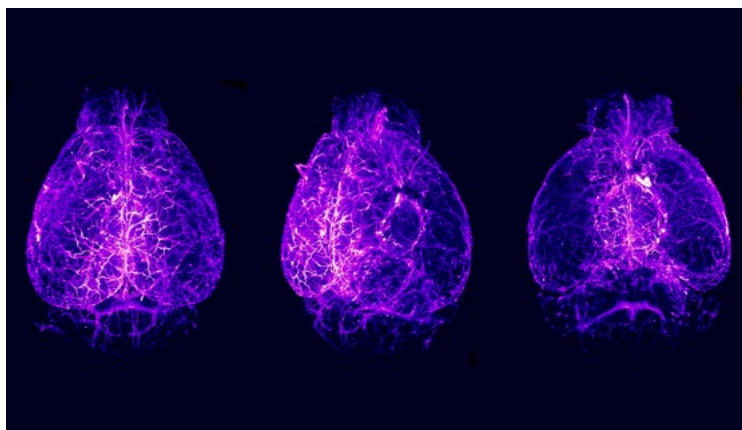
Campus France can provide all the help you may need

▶ <https://www.campusfrance.org/en>

67 countries must use the online Campus France procedure:

▶ <https://www.campusfrance.org/fr/candidature-procedure-etudes-en-france>

ATTENTION: to benefit from this support service a financial contribution is required.



Courtesy of Isabelle Brunets' lab, author: Marie KARAM

Finding student accommodation

Links for accommodation

Information & links are indicative - don't hesitate to contact your hosting laboratory, which may have partners to share with you.

▶ <https://trouverunlogement.lescrous.fr/>

Allocation of 2023 housing units closed. **Application 2024-2025, start in April 2024.**

▶ <https://www.ciup.fr/demander-hebergement/>

Procedure closed for 2023 - the procedure for 2023-2024 will be online in April 2024.

▶ <https://bienvenue.ciup.fr/questionnaire/?lang=en>

▶ <https://www.lokaviz.fr/>

Student accommodation in a private home

▶ <https://www.immojeune.com/en/student-housing/paris-75.html>

Accommodation solution for students

▶ <https://logement.studyrama.com/location-intergenerationnelle>

Finding cheap or affordable accommodation in Paris, while keeping someone who needs it company: intergenerational housing brings generations closer together, with students and retired people living side by side.

▶ <https://ensemble2generations.fr/logement-etudiant/>

In France, you are required to take out home insurance

- Visale has been set up to act as a guarantor for student accommodation if you are between 18 and 30 years old
▶ <https://www.visale.fr/>
- Garantme helps you find your apartment by acting as your guarantor. Our role is to reassure landlords about your profile and your ability to pay your rent every month.
▶ <https://garantme.fr/en>

Bank Account

Opening a bank account is mandatory to receive your salary and bonus. To open a bank account, you will need to provide proof of identity and proof of address. Banks may ask you for other documents. **At the end of your stay, remember to close your bank account by sending a registered letter with acknowledgement of receipt.**

Here are a few non-exhaustive suggestions:

- HSBC interesting for international transactions
- Société Générale, BNP Paribas, ...and bank online as Hello Bank, Orange bank, ... ,
Remarks: Considering that, all these banks have their own platforms. No need to go to the bank.

Academic registration

The procedure and registration dates vary from university to university. It is therefore important to check each university's doctoral school website for details of the procedure, documents to be provided and application deadlines.

The administrative registration university depends on :

- the attachment of the host laboratory to one or more of the co-accredited universities
- on the establishment which will manage your employment contract
- on the nature of the thesis funding.



Here are a few links to doctoral schools to which researchers from the DIM C-BRAINS are affiliated

- ▶ <https://ed3c.sorbonne-universite.fr/en/registration/1st-year>
- ▶ <https://ed515.sorbonne-universite.fr/inscriptions/inscription-en-1re-annee>
- ▶ <https://ed261.u-paris.fr/candidatures/concours-de-led261/>
- ▶ <https://u-paris.fr/premiere-inscription/>
- ▶ <https://odf.u-paris.fr/fr/offre-de-formation/doctorat-SPD/sciences-technologies-sante-STSEcole-doctorale-130-informatique-telecommunications-et-electronique-de-paris-K62APBQK.html>

The CVEC, what is it?

Every student in initial training in a higher education institution must obtain, prior to registration, a certificate of payment or exemption from payment of the Student Life and Campus Contribution (CVEC).

- ▶ https://cvec.etudiant.gouv.fr/?_locale=en

Taxes

In France, declaring your annual income is compulsory, but this does not mean that you will necessarily pay tax (tax exoneration depends on the tax treaties and your last country residence If there is an international agreement between your country and France).

You must declare your income between mid-April and early June.

The first declaration can be made on paper (Cerfa n°2042) or online

▶ <https://www.impots.gouv.fr/accueil>

or

▶ https://www.impots.gouv.fr/international_en

You will receive an email from your local tax office providing you with your tax number and access codes enabling you to create a personal account on the national tax office website. Your income tax is directly deducted each month from your payslip. The rate is calculated by tax authorities.

You can check or change your tax rate on the website. But to access the site, you will need a tax number.

▶ <https://cfspart.impots.gouv.fr/LoginAccess?op=c&url=aHR0cHM6Ly9jZnNwYXJ0LmltcG-90cy5nb3V2LmZyLw>

You can make the request by filling in CERFA form n°2043:

▶ <https://www.impots.gouv.fr/formulaire/2043-sd/demande-de-taux-personnalise-etou-da-comptes-de-prelevement-la-source>

Important : if you are moving, remember to advise the Tax Office website.

Health insurance

Social security is mandatory in France. You will need to create an account to receive documents and information.

▶ <https://www.service-public.fr/particuliers/vosdroits/R3049?lang=en>

For European or non-European student with a French contract, you will be assisted by the people in charge of your contract (HR).

Here, is some additional information to help you complete the dossier : **before your arrival thought to get your plurilingual birth certificate for EU and non EU document established by a foreign authority to be legalized and /or apostilled and sworn translation in French.**

Transport

As a student:

- You have the possibility to get an Imagin R pass (up to 26 years) and attention if you are over the age of 26, you'll require a PassNavigo.
 - ▶ <https://www.iledefrance-mobilites.fr/en>
- You can choose your package
 - ▶ <https://www.iledefrance-mobilites.fr/en/tickets-fares>

You will be assisted by the people in charge of your contract (HR), the cost of your transportation package is partially reimbursed by the employer in your payslip.

French Classes

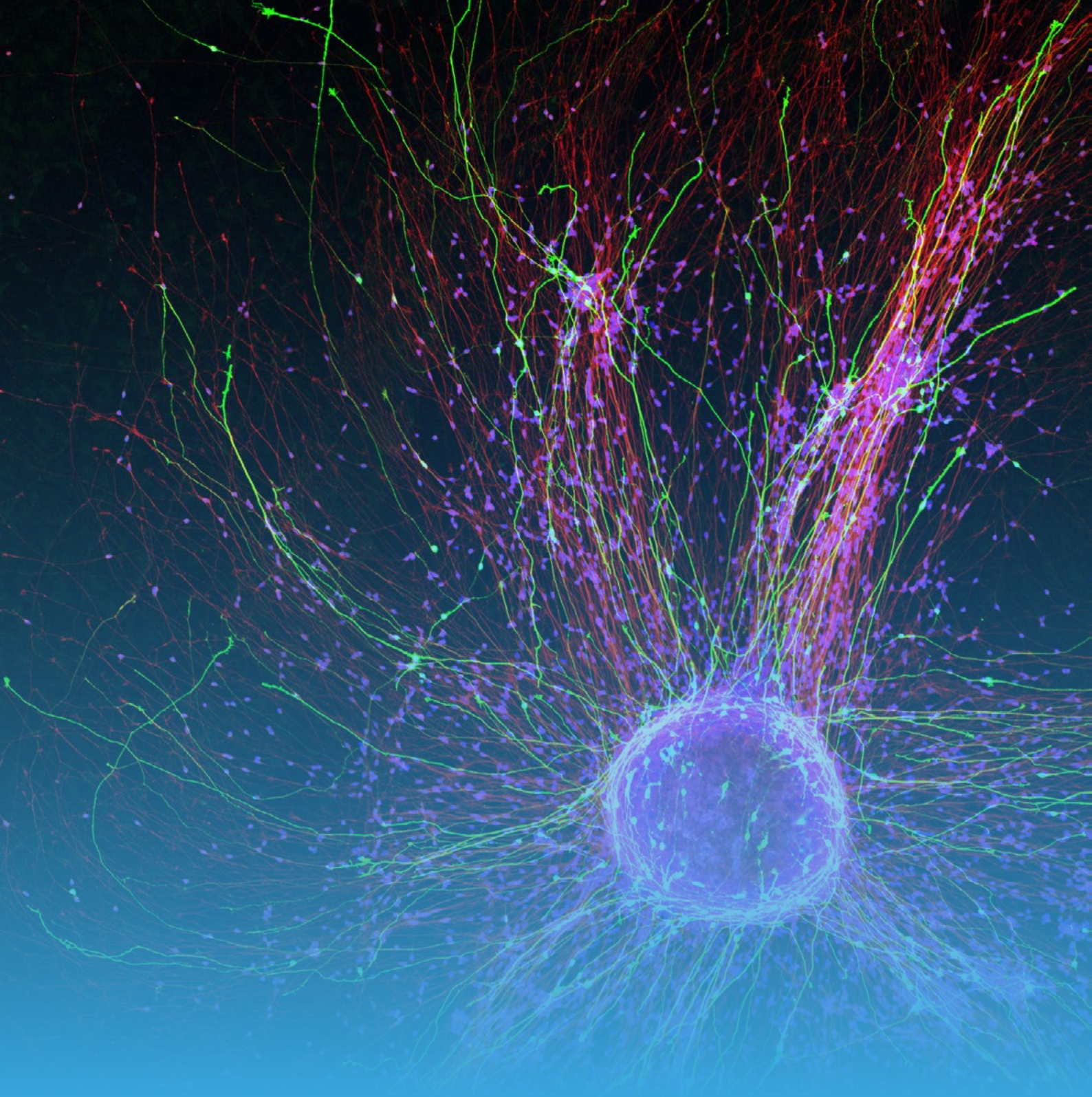
- Cours de civilisation française de la Sorbonne
 - ▶ <https://www.ccfs-sorbonne.fr/en/>
 - ▶ Contact Violaine Peladan : violaine.peladan@ccfs-sorbonne.fr
- Sorbonne Université classes:
 - ▶ <https://lettres.sorbonne-universite.fr/formation/apprentissage-des-langues/cours-et-formations-en-francais-langue-etrangere-fle>
- Université Paris Saclay:
 - ▶ <https://www.sciences.universite-paris-saclay.fr/formation/service-des-langues/nos-formations/cours-de-fle-francais-langue-etrangere>
- Université Paris Cité:
 - ▶ <https://u-paris.fr/eila/en/french-as-a-foreign-language-fle/>

Publications and acknowledgement

The financial support of the DIM C-BRAINS and the Region Ile de France have to be explicitly acknowledged in all contributions and publications involving a DIM student.

Examples:

- The sentence "action financed by the DIM C-BRAINS and the Île-de-France Region" and the logo DIM (mandatory in all the scientific information and communication documents).
- The following format "XXX (name) was supported by a doctoral fellowship from DIM C-BRAINS ", together with the logo of DIM if applicable.



Contacts:

Scientific coordination: Marine Belin-Siwiaszczyk - contact@dim-cbrains.fr

Administrative and financial management: Raïssa Tall - raissa.tall@inserm.fr